

**NEW** PRODUCT!  
PRELIMINARY BULLETIN

# PAR-32/36 Series

PAR-32/36 TIR6 Super-LED™ (patent pending)  
4" Round Sealed Beam Lighthead



**The brightest four inch round lighthead on the market today!**

**Lighthouse and standard adapter provide dual function PAR-32 (4" round) and PAR-36 (4-1/2" round) capability. Choose from a flat lens or the extended lens style which is perfect for motorcycle applications or on DOT trucks with rising dumpers.**

**Add the extra margin of safety with super bright, super wide-angle LED lighting.**

## FEATURES

- PAR-32 (4") lighthead with adapter for PAR-36 (4 1/2") applications.
- Flat or extended shatter-resistant polycarbonate lens.
- Choice of steady burn, flashing or synchronized flash patterns.
- Rugged, long-life LEDs draw low current and rival strobes in intensity.
- Grommet mount or a flush mounted trim ring available in black or chrome.
- 6" pigtails standard.
- Available in all five safety colors.

## DIMENSIONS

Flat Lens 4" (102mm) Dia. x 3-1/8" (79mm) Depth.

Extended Lens 4" (102mm) Dia. x 3-15/16" (101mm) Depth.

Overall Diameter with Adapter : 4-7/16" (112mm).

## MODELS

**2F\*000\*R:** Flat lens, steady burn.

**2F\*00F\*R:** Flat lens, flashing, 15 flash patterns.

**2F\*00Z\*R:** Flat lens, synchronizable, 1 flash pattern (alternate/simultaneous).

**2E\*000\*R:** Extended lens, Steady Burn.

**2E\*00F\*R:** Extended Lens, flashing, 15 flash patterns.

**2E\*00Z\*R:** Extended lens, synchronizable, 1 flash pattern (alternate/simultaneous).

## OPTIONS

**2FLANGEB:** Flush mount trim ring in black finish.

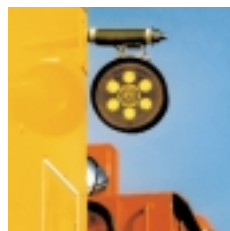
**2FLANGEC:** Flush mount trim ring in chrome finish.

**2GROMMET:** Grommet mounting kit for LED models.

\* Replace symbol in model number with letter indicating LED color desired: **A** = Amber, **B** = Blue, **C** = White, **R** = Red, **G** = Green.



Mounted on a police motorcycle.



Mounted on side of a DOT truck

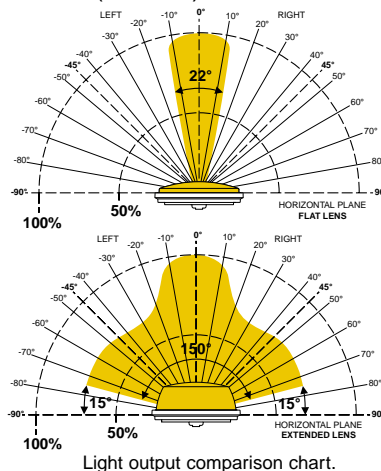
Whelen Engineering reserves the right to upgrade and improve products without notice.



Available in red, amber, clear, blue & green

Form# PAR0603

© 2003 Whelen Engineering Company, Inc.  
Form No.11494A-0603



**WHELEN**<sup>®</sup>  
ENGINEERING COMPANY, INC.

Route 145, Winthrop Road  
Chester, Connecticut 06412-0684  
(860) 526-9504 • Fax: (860) 526-4078  
www.whelen.com

PAR-32/36 SERIES - TIR6 SUPER-LED™ SEALED BEAM LIGHTHEAD